



AG. SERVICE BOARD BREAKFASTS

HUNGRY?



The Saddle Hills County Agricultural Service Board would like to invite all County residents to the 2008 ASB Breakfasts. Come on out for bacon and eggs and meet the ASB.

Date	Location
Feb. 27	Bonanza
Feb. 28	Savanna
Feb. 29	Gordondale
Mar. 3	Blueberry Mountain
Mar. 6	Woking

The breakfasts will kick off at 9:00am. We hope to see you there!

2008 No Spray Agreements

Saddle Hills County will be conducting a roadside-spraying program for weed and brush control during the months of June through September 2008. All areas of the County may be affected. Areas that were brushed in 2007 will be sprayed this year, as will roads where full Rights-of-Way were mowed and anywhere noxious weeds are found.

Any landowner who prefers no spraying be conducted adjacent to their property on a particular section of County roadway is asked to please contact the County's office to sign a No Spray agreement. If you choose to sign this agreement, you will be responsible for the weed and brush control in that area. This request is valid for one year only.

Any landowner along a highway that does not want spraying is asked to contact LaPrairie Group at 1-800-828-3908.

For more information, please contact the Manager of Rural Development, Amy Kaut, at 864-3760 or akaut@saddlehills.ab.ca

PUBLIC ENEMY #3 – CANADA THISTLE

Part One – Who Cares About Canada Thistle?

Anyone living in Saddle Hills County knows this weed well – 2007 was one of the worst years ever for Canada thistle infestations. Places that hadn't seen thistle in years were covered in it. So why should you care? Can you really ever get rid of this tough, invasive weed? No matter how thick an infestation you have or wherever it's located, thistle can always be managed. And there are two reasons why you should be on guard against this weed:

1. It's your responsibility under Alberta legislation. This is probably the last thing you want to hear, but the Alberta Weed Control Act has designated Canada thistle a noxious weed, which means you can be prosecuted if you ignore it and allow it to spread, not to mention your neighbours will be less than impressed as well. A large part of an Agricultural Fieldman's job is to enforce the Weed Control Act, which outlines the requirements for controlling noxious weeds such as Canada thistle. Every County in Alberta has an Ag Fieldman, so don't think they'll just go away if you avoid them long enough. They're here to help you get rid of your weeds once and for all. If you want information or help controlling noxious weeds in Saddle Hills County, please contact the Manager of Rural Development, Amy Kaut, at 864-3760.

2. It's costing you \$\$\$\$\$. There's a reason why this European weed has "Canada" in its name. It has adapted to grow and thrive in our climate, and allowing it to get a foothold on your land will cost you thousands of dollars in control measures and lost yield. Here's an example to give you an idea of how much this weed can cost you. At a density of 15 stems per square meter (1.5 stems per square foot), Canada thistle causes 17% yield loss in canola. That's a 5 bu/acre loss in a 30 bu/acre crop, amounting to a cash loss of \$60/acre (January 11 canola prices at Rycroft). How does this weed measure up against other weeds? Research has shown that Canada thistle is 3-4 times more competitive than wild oats. Also, it's a perennial, so if you leave it for one year, it's going to be that much worse next year. It's easiest and cheapest by far to get rid of the weed as soon as you find it on your land.

Watch for Part Two next week – An overview of assessment and control measures for Canada thistle. If you have any questions about the content of these articles, or would like help developing a Canada thistle management plan in Saddle Hills County, please contact Amy Kaut at 864-3760 or akaut@saddlehills.ab.ca

REQUEST FOR PROPOSALS

External Auditing Services

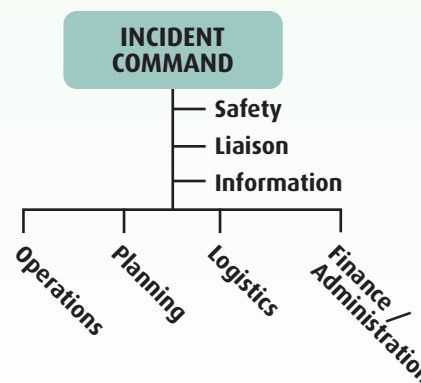
Saddle Hills County is seeking interested firms to submit proposals for external auditing services. For more information and the proposal package, interested firms are to contact Tarolyn Peach, Chief Administrative Officer, at 864-3760 or by email. The deadline for proposals is April 15, 2008.

ICS 200 Incident Command System

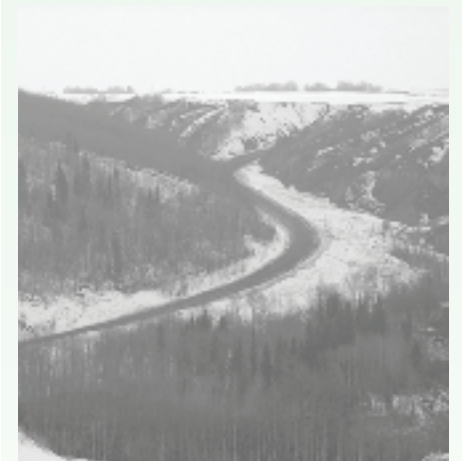
Hosted by: Saddle Hills County

Date: February 8 & 9, 2008
 Time: 7:00 pm - 10:00 pm Friday
 9:00 am - 5:00 pm Saturday
 Place: Saddle Hills County Office

This course is sponsored by the Alberta Fire Service Training Grant. Prior completion of ICS 100 not required. Contact Brian or Janice at 864-3760 to register.



Doe River Valley Re-Construction & Re-Alignment Project Request for Proposal



Saddle Hills County is seeking Engineering proposals for Environmental Assessment, Preliminary Engineering, Environmental Considerations, Detailed Design, Tender Preparation and Construction Supervision & Final Detail for the Canada – Alberta Municipal Rural Infrastructure Funded (CAMRIF) TWP Road 805A at Doe River Valley Re-construction (Re-alignment) Project. The particulars of which are contained in the Terms of Reference.

If your firm is able to commit the necessary resources to meet this schedule and to complete this assignment on behalf of the County, you are requested to send three (3) copies of your proposal no later than 4:00 p.m., Friday, February 8, 2008.

For the full details on this Request for Proposal, please visit www.saddlehills.ab.ca

In the Community

Valentine Bingo

Saturday, February 9, 2008
 7:30 p.m.
 Silver Valley Community Hall

Family Day at Moonshine Lake

February 17, 2008
 11 am - 4 pm
 Free hotdogs and coffee sponsored by Home Hardware and free doughnuts sponsored by Moonshine Park.

FOURTH CREEK Bingo

Fourth Creek Hall
 Saturday, February 16th, 8:00 p.m.

FITNESS PROGRAM Woking Community Hall

Monday and Wednesday, 7 pm - 8 pm
 Men and Women – adult to senior age group
 Low Impact program with cardiovascular, strength and flexibility exercises