

FARM ANIMAL EMERGENCY PREPAREDNESS PLAN FOR THE CENTRAL PEACE

72
hrs



INTRODUCTION

During the summer of 2019, there were a multitude of fires across the northern half of Alberta that resulted in great economic, emotional and physical loss to residents, business owners and producers. When these events took place it resulted in municipalities attempting to coordinate measures they were unprepared for. Within the Central Peace Region, comprised of Saddle Hills County, M.D. of Spirit River #133, Birch Hills County, Town of Spirit River and the Village of Rycroft, there is an elevated risk of a similar situation occurring in the event of a large animal livestock emergency.

In the spring of 2020, after discussions around Emergency Large Animal Plans, Saddle Hills County administration applied for a grant via the Canadian Agricultural Partnership (CAP) program. This is a 50/50 cost share program that is split between the applicant and the provincial government. A third-party contractor was hired, with the funds obtained, to assist in the formation of the plan, and it is currently in the final stages of completion.

The plan is a subsection of the existing Central Peace Emergency Management Plan (CP-REM) and will be reviewed and updated on an ongoing basis.

The plan will allow municipal staff and livestock owners to execute a safe, clear and concise course of action during an emergency that involves large livestock/farm animals, including situations such as wildfires, floods, transportation accidents and disease outbreaks, among others.

The goal behind the plan was to address three main topic areas:

- Animals impacted by an Emergency or Disaster (fire, flood, tornado etc.)
- Animals involved in a transportation incident
- Animal disease outbreak and mass carcass disposal



A FEW THINGS TO CONSIDER FOR THE FUTURE

PLAN TO SHELTER IN PLACE

In the case of an emergency it is recommended to shelter your animals in place if possible.

It is a great management practice and highly recommended to survey your property for the best locations in case of disasters, such as fire or flood. Ensuring an adequate source of food and clean water are also essential for these locations.

If your pasture has large open space, evenly spaced native tree species and no overhead powerlines your livestock will most likely be better off to shelter in place in the event of an emergency vs. being evacuated.

Ensure you have enough food and water for yourself and your livestock for at least **72 hours** (3 days).



GET PREPARED

If in the event you, or your animals, must leave the property, here is a list of a few things to consider having in your operation

- Visible identification and proof of ownership for all your animals
- Turning off all power to buildings and homes (emergency dependent)
- Securing all large objects that could become blowing debris (Trailers, tanks, troughs)
- Labelling hazardous materials and placing them all in a safe place. Provide local fire, rescue, and emergency management authorities with information about the location of any hazardous materials on your property
- Storing chemicals in an area that will not result in runoff or seepage if they are punctured or spilled
- Identifying and removing all potential fire hazards



MAKE AN EMERGENCY PLAN

Creating an emergency plan of your own with important contacts such as neighbours, employees, veterinarians, poison control, transportation resources and animal care can go a long way in the event of an unplanned emergency.

Keeping this list on you at all times in your cellphone, or by other means, could assist you if you are away from your property during an event.

Choose an out of town contact person who is unlikely to be affected by the same emergency. Ensure they have a copy of this plan and all pertinent information as well.

PREPARE A FARM EMERGENCY KIT

Make an emergency kit so you have all of your emergency supplies in one location and let everyone know where it is. Check and update the contents regularly.

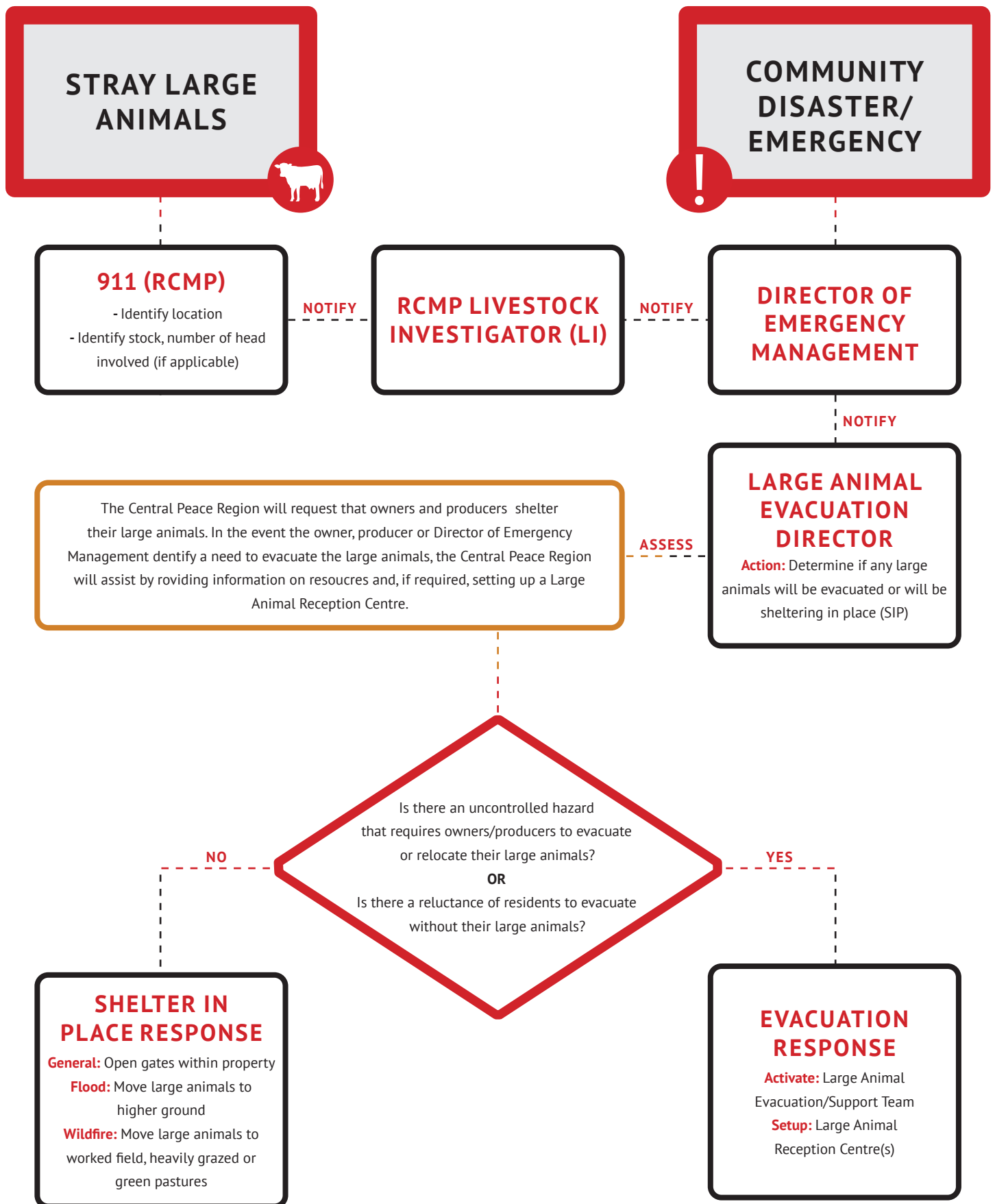
Include the following items and personalize according to your needs:

- Current list of all animals, including their location, and records of feeding, vaccinations, and tests. Make this information available at various locations on the farm.
- Supplies for temporary identification of your animals, such as plastic neckbands and permanent markers, to label animals with your name, address, and telephone number.
- A basic first aid kit.
- Handling equipment, such as halters, cages, blankets, and appropriate tools, for each kind of animal. Include bolt-cutters to quickly free animals in an emergency.
- Water, feed, and buckets and the tools and supplies needed for sanitation.
- Emergency equipment, such as a cell phone, flashlights, portable radios (with weather radio band) and/or weather radio, and batteries. Know the weather radio broadcast frequencies and local weather information telephone numbers.
- Other safety and emergency items for your vehicles and trailers.



IMMEDIATE ACTION

DECISION TREE



IN PARTNERSHIP WITH

