

Volume 6, Issue 3
Winter, 2023

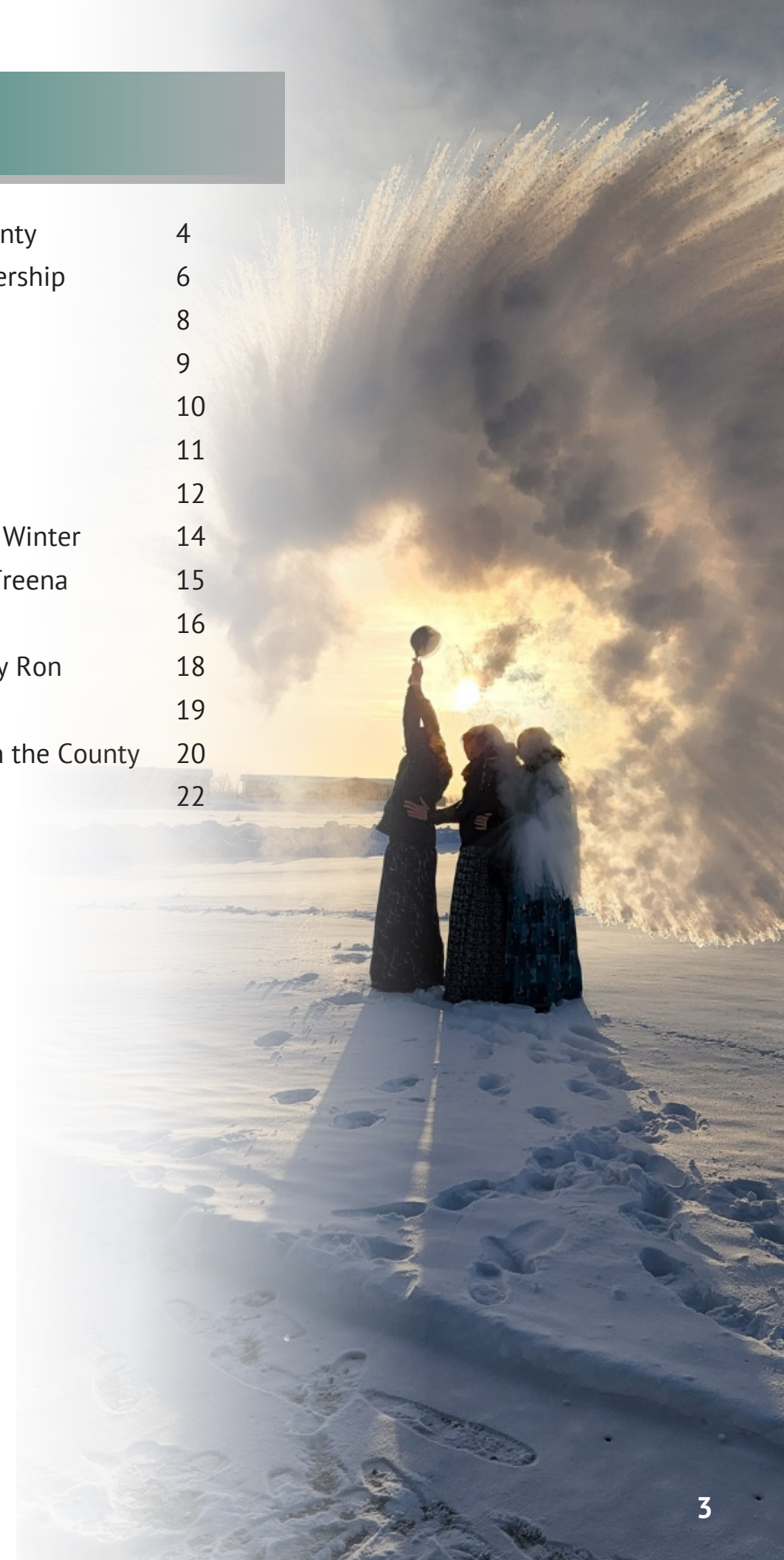


Saddle Hills County

LIVING

INSIDE

Christmas at Saddle Hills County	4
Mighty Peace Tourism Membership	6
Agriculture News	8
Photo Contest Reception	9
Our History Drop-in Day	10
Farm Transition Workshop	11
Low-Cost Winter Fun	12
Preparing Trees & Shrubs for Winter	14
Business Feature: Baking by Treena	15
County News	16
Business Feature: Metal Art by Ron	18
Meet Our Staff	19
Guided Saddle Hills: Winter in the County	20
Municipal Mythbusters	22



*Cover photo by Anna Richard
Interior photo by Judy Stahl*



CHRISTMAS AT THE COUNTY

YOU ARE INVITED 2023 CHRISTMAS EVENT WELCOME IN THE FESTIVE SEASON WITH US

WEDNESDAY, DECEMBER 6, 2023 ❄️ COUNTY COMPLEX ❄️ 3 - 7 P.M.



FUN FOR ALL AGES!

The Saddle Hills County Christmas Event is back! Join us on **December 6, 2023**, from 3-7 p.m. at the County Complex. Have your photo taken with Santa, participate in a Candy Cane Hunt or Colouring Competition, view all of the entries from this years Photo Contest, firework display, and much more! Catered by Yvonne Rogers.

WEDNESDAY
DECEMBER
6TH

STARTS
3^{PM}

SADDLE HILLS COUNTY COMPLEX
Junction of Hwy 49 & Hwy 725



FOOD & DRINKS
seasonal goodies
catered by Yvonne Rogers



CONTESTS & PRIZES
colouring contest, door prizes,
candy cane hunt



PHOTO OPS
meet Santa, selfie area,
fireworks display



Christmas Hampers

ACCEPTING DONATIONS & NOMINATIONS UNTIL
DECEMBER 14, 2023 @ 4:30 P.M.

HELP THE LESS FORTUNATE IN OUR COMMUNITY THIS HOLIDAY SEASON BY
DONATING TOWARDS THE SADDLE HILLS COUNTY CHRISTMAS HAMPER PROGRAM.

DONATIONS CAN BE MADE AT THE SADDLE HILLS COUNTY OFFICE
BEGINNING ON **NOVEMBER 14, 2023**, DURING REGULAR BUSINESS HOURS.

REQUIRED FOOD ITEMS: BOXED MASHED POTATOES, GRAVY MIX,
CRANBERRY SAUCE, DREAM WHIP, PIE FILLING, PIE CRUSTS, BOXED STUFFING,
BISCUIT MIX, AND CANNED VEGETABLES.

TO NOMINATE YOURSELF, OR SOMEONE ELSE, OR FOR MORE INFORMATION PLEASE
HEAD TO THE COUNTY WEBSITE, CALL US, OR VISIT US AT THE COUNTY OFFICE.





BECOME A MIGHTY PEACE TOURISM MEMBER

Mighty Peace Tourism is a not-for-profit organization that collaborates with our members to support and promote the Peace and Smoky River regions as a destination for travel as well as investment. We work tirelessly to showcase the best northwest Alberta has to offer in order to grow the tourism industry in a sustainable manner; attracting visitors to our region, encouraging them to stay longer, and helping them explore our beautiful region.

MEMBER BENEFITS

Mighty Peace Tourism promotes people, places and experiences across Alberta's Peace Region to all visitors. Our mission is to inspire visitor exploration across Alberta's Peace Region by being a destination of choice.

There is an ancient saying thought to be from the First Nations of Northern Alberta. "Once you drink from the waters of the Mighty Peace, you will always return."

TOP 5 MEMBER BENEFITS:

- Inclusion in fresh and relevant marketing campaigns through MPT's social platforms and website including itineraries, blogs, and influencer content.
- A visually appealing, polished, and professional listing on MPT's well-designed, highly optimized website. Including links to your business or organization's socials and website.
- Tourism development. Assistance in bringing new, and innovative products, experiences, and services to our region.
- Information on accessing and utilizing federal and provincial funding.
- Opportunity to be featured in the widely distributed year-round MPT Activity Guide.

MEMBERSHIP PACKAGES

- MUNICIPAL**
- Invitations to events and activities
 - Opportunity to sponsor events and activities.
 - Inclusive member benefits
 - Featured on our social media accounts
 - Assistance with your communities listing on the ATIS website, maintenance and updates provided if applicable
 - MPT will add the events your municipality has created into our Facebook events page
 - Placement on the Mighty Peace Tourism Activity Guide that we produce and distribute throughout the region through our Visitor Guide.
 - Destination Page on our website.
 - Featured 5 Best Places to Visit in your community for winter and summer.

- BUSINESS \$275**
- Featured listing online
 - Invitations to events and activities
 - Opportunity to sponsor events and activities.
 - Inclusive member benefits
 - Featured on our social media accounts
 - Assistance with your company's listing on the ATIS website, maintenance and updates provided if applicable
 - MPT will add the events your business has created into our Facebook events page
 - The ability to add secondary same owner businesses to your membership for only \$50+GST annually

For any questions regarding our membership packages, don't hesitate to contact us. admin@mightypeace.com | 780-332-2363

PURCHASE YOUR MEMBERSHIP



110,000+
PAGEVIEWS PER YEAR
with 20-30% year over year website growth over the past 5 years.



~5,000
LEADS TO INDUSTRY
our website alone drives 2000-5000 leads to industry partner websites and profiles per year.



8,000+
FOLLOWERS
the MPTA audience on facebook & instagram continues to grow.



~400,000
2022 REACH
Online advertising on social media has help generate over 2.3M impressions in 2022.

AGRICULTURE NEWS

THE LATEST AGRICULTURAL NEWS



Alberta Ag Societies Provincial Grant Opportunity - Now Open!

Alberta's government is launching the Agricultural Societies Infrastructure Revitalization Program, a new capital grant that allocates \$2.5million annually to help ag societies update existing facilities.

Applications for eligible projects open on October 5, 2023, and the grant can be used to make improvements including roof repairs, accessibility enhancements, heating upgrades, and window installations.



Recognize your local Agricultural Society with an Innovation Award!

The Agricultural Society Innovation Award recognizes Agricultural Societies in Alberta for their innovation, resilience, and commitment to their communities.

The applications are evaluated based on creativity, community impact, overcoming challenges, and overall impression. Winners receive a banner suitable for display in their area or community hall to mark this achievement along with a formal certificate of recognition. The deadline is November 30, 2023.



Young Agrarians Business Mentorship Network - Applications Open!

The Young Agrarians Business Mentorship Network (BMN) is now accepting applications! Young Agrarians (YA) is a farmer to farmer educational resource network for new and young ecological, organic, and regenerative farmers in Canada. It is volunteer-driven, with farmers across the country organizing on-farm events and building community to create spaces for knowledge sharing and growth.



STAY UP TO DATE

ON AG NEWS FROM SADDLE HILLS COUNTY



Agriculture is at the heart of our community. Keep informed of all the latest Agriculture News in Saddle Hills County or get more information on any of the stories below by visiting the dedicated Agriculture News stream on our website at saddlehills.ab.ca/agnews or by scanning the QR code. You can also follow the hashtag [#saddlehillsag](https://www.instagram.com/saddlehillsag) on Instagram for all the latest agriculture updates.



Discover the Peace PHOTO CONTEST RECEPTION

Saddle Hills County Administration Building
Thursday, November 16, 2023
6 - 8 p.m.

Photography Viewing
Light Refreshments

Awards Presentation
Meet & Greet

OUR HISTORY DROP-IN DAY

Blueberry Hall
November 7, 2023 | 10:30 a.m. - 2:30 p.m.

LEARN FROM THE EXPERTS

Preservation
Family Records
Research Assistance

Local History
Record Reproductions
Tools & Techniques

For a one-on-one appointment with the archivist contact
Jack Lawrence at archivist@southpeacearchives.org

Saddle Hills
COUNTY

 **South Peace**
REGIONAL ARCHIVES

FARM TRANSITION WORKSHOP

NOVEMBER 8, 2023

📍 FOURTH CREEK HALL ⌚ 6 P.M.

GETTING YOU STARTED ON THE RIGHT TRACK
TO FARM SUCCESSION

ft. Joel Bokenfohr, FCC Business Advisor

Get practical tips and takeaways from an industry expert
to successfully move through the stages of
transition planning

Don't miss out on this free event incl. supper
Register in advance at saddlehills.ab.ca/farm-transition

 **Saddle Hills**
COUNTY

LOW-COST WINTER FUN



MAKE YOUR OWN PLAY DOUGH

What kid, or adult for that matter, doesn't love creating things with play dough? Get creative and build your own worlds with this easy, homemade play dough recipe. Homemade play dough lasts for months in a ziplock bag, is inexpensive to make with things you likely already have in your home, can be customized with different colours and scents, and, most importantly, doesn't stick.

To make the dough, you will need:

- 2 cups of all-purpose flour
- 3/4 cup of salt
- 4 teaspoons of cream of tartar
- 2 cups of lukewarm water
- 2 tablespoons of vegetable or coconut oil
- Optional: Food Colouring

Stir together the flour, salt, and cream of tartar in a large pot. Add the water and oil and, if you're only making one colour, add the food colouring now, as well. Cook over a medium heat, stirring constantly. Continue stirring until the dough has thickened and begins to form into a ball. Remove from the heat and place inside a gallon sized bag or onto wax paper to cool. Knead inside the bag until smooth. If you are making multiple colours, divide the dough into balls and put into smaller bags. Use around 5 drops of colour and add more to brighten it, as needed. Knead the dough inside the bag to avoid staining your hands. Once it's all mixed together, you're ready to play!



READ FREE E-BOOKS & MAGAZINES ONLINE

Visit your local libraries website to view a variety of online resources, including e-books and magazines you can download, absolutely free! Our local libraries also offer a variety of events throughout the year, for youth and adults, and details can be found on their website or social media pages.

Why not take it in turns to choose a book and practice reading aloud? For those looking for some quiet time, you could read individually and then come together to talk about the stories you read or new things you've learned. Encourage your children to read by making the task fun and interactive, giving them a target or end goal that they can really look forward to!



CREATE YOUR OWN SCAVENGER HUNT

A fun activity for inside or outside play during any season! You can either plan the hunt yourself or get the whole family involved.

The best Scavenger Hunts revolve around a theme. This could be something basic like food or nature, or more adventurous centered around a favourite character or book ie. Harry Potter.

To set your team off on their hunt you will need to create a list of the items or clues that they need to find and any tools they need to find them. For example, you could create a series of riddles or questions, each leading players to the next clue, with the overall goal of finding a hidden object, or you could create a list of items for them to locate around the house or the outdoor area you've chosen ie. a leaf, an apple, a pencil etc. You can then decide if you want your players to collect the objects and return them to you or take it one step further and have them capture interesting photographs or drawings of the objects. Make sure you keep a list of all the places you've hidden your objects or clues so that you don't forget! Scavenger Hunts are a great way to be creative with ideas and goals and to get the whole family thinking and working together. The main goal: just to have fun!



CREATE LOW-COST FAMILY RECIPES

Food and cooking have been bringing families together for generations. From passing on Grandma's pie recipe, to family meals for special events, or taking it in turns to cook as a family, it is a great way to build connections and traditions, as well as skills that children and youth can take on to use later in life.

Why not take it in turns to come up with a family meal from things you already have in your home? You can use these recipes to teach valuable cooking and meal-planning skills and experiment with new meals. These may also end up creating new traditions that you can pass along for generations to come.



CREATE YOUR OWN PHOTOGRAPHY OR ART PROJECTS

Our Photo Contest is an annual event and it is never too early to prepare! Aside from that, creating photography, or other art projects, to complete as a family is a great way to work together and explore your creativity.

Why not take it in turns to come up with an idea or theme and then take photographs that align with that theme? You could also combine it with a scavenger hunt and have participants take creative or experimental photographs of the things they find. Learn new skills by choosing a different outcome each time, such as practicing how different settings on the camera work or by focusing on specific colours or black and white photographs. You don't need a professional camera or materials for this, your phone or anything in your home can be used to create art. Get creative and share your projects with us!

Preparing Trees & Shrubs for Winter

by Toso Bozic

For trees and shrubs, winter presents a series of formidable challenges. Harsh conditions, from freezing temperatures to limited sunlight, can take a toll on their health and vitality. In the harsh winter climates of Alberta, trees and shrubs often face various threats that can lead to extensive damage. From the biting cold temperatures and dry air to the winter sun and the relentless forces of wildlife, salt, deep freezes, heavy snow, and ice, the challenges are plentiful. However, by taking a few proactive measures, you can significantly reduce the potential for damage and ensure the survival and vitality of your trees and shrubs.



COLD WINTER DAMAGE AND PREVENTION

Cold winter damage is a common concern, arising from factors such as a tree's inability to endure extreme cold, dry winds and insufficient snow cover, in some regions of Alberta. The weight of heavy snow and ice late in the fall or early spring, also cause damages. Here's how you can minimize the risk:

Select Hardy Species: Alberta falls within Canada's cold hardiness zones 1, 2, 3, and partially zone 4. To safeguard your trees and shrubs from the cold,

choose species that are hardy enough to thrive in our climate.

Fall Watering: While it may seem counterintuitive, winter drought can occur when trees lose moisture through transpiration but cannot replenish it due to frozen soil. Watering trees prior to first soil freeze is extremely important.

Strategic Planting: Consider planting your trees and shrubs in sheltered areas, such as near buildings or in locations already protected by established trees. This positioning shields them from direct exposure to harsh winds.

Pruning: Properly pruning your trees reduces the likelihood of branch breakage during heavy snowfall or ice storms.

Installing Plastic Tree Guards: Installing plastic guards protects young tree bark from winter sunscald. Many young, thin-barked ornamental and fruit trees suffer from sunscald. This physiological problem of frozen tissue (dead tissue) occurs during the winter, near sunset. It mostly occurs on the south or southwest side of the trunk, which is also heated by the sun, before it thaws and then rapidly refreezes.

For the full article, or a copy of our Tree Resources Booklet, please visit our website or scan the QR code. Our Tree Specialist can also provide individual advice relevant to your needs.

OUR TREE SPECIALIST

For more informative articles and to contact our Tree Specialist, head to our website or scan the QR code.



BUSINESS FEATURE

BAKING BY TREENA



Bay Tree, AB.
(250) 219-3878
ronunderwood40@yahoo.com
@bakingbytreena

Q&A WITH TREENA UNDERWOOD, OWNER

Treena Underwood was first introduced to making the savoury treat Nuts and Bolts by her grandmother more than 30 years ago. She instantly liked it – but not exactly how grandma made them. Underwood remembers, Grandma microwaved her way to a quick, easy snack using worcestershire sauce as a flavouring agent. That didn't sit well with Underwood, so she began tweaking the recipe, trying different cereal mixtures, and, more importantly, making her own sauce. She also ditched the flavoured cereals, grandma's preference; she figured she had better control of how she flavours her Nuts and Bolts if she uses plain cereals. Today, Underwood sells about 30 pounds each week of her Nuts and Bolts, her bestseller at every farmers market she attends. She is a regular at the farmers markets in Dawson Creek and Bay Tree.

How did you arrive at and perfect your own Nuts and Bolts recipe?

As with any recipe tweak, everything was about trying new things and different combinations to see what seems to work best as far as customer response goes. Over the years of experimenting, each time I have a new twist to the recipe, I will have it taste-tested with family members and neighbours. If family likes it, if neighbours like it, others will probably like it too. I have also learned a lot from trading recipes with friends and similar-minded people; it took a lot of years before I was able to come up with the right mix of cereals and the right sauce that, I think, blend well together.

Is snack food, sort of, your differentiation at the farmers markets?

Yes, but not intentionally. As a matter of personal choice, I don't do bread, nor cinnamon buns, nor pies. So, I settled on snack items - Squares, Cookies, Nuts and Bolts, Peanut Brittle. These are some of the items I'm known for, but I also carry a whole bunch of other treats, among them, Muffins, Eatmore Bars, Butterscotch Haystacks, Dog Treats, Peanut Butter Cups, and Rhubarb Coffee Cake.

Do you have snack items for people who embrace a different eating lifestyle either as a personal choice or as a result of some health conditions?

Yes, I have. My Peanut Brittle, for example, is gluten-free and my Eatmore Bars can be consumed in moderation by people with blood-glucose issues. Additionally, I'm using alternative sweeteners, such as Splenda, in some of my recipes to expand my options to as many people as possible. I also have Nuts and Bolts that contain no nuts (I guess you can just call them Bolts).

Do you take orders as well?

Yes, I do. I get an average of 15 orders each month, which is keeping me busy. I have customers from Grande Prairie, to Dawson Creek, to Fort St. John. Due to my proximity to Dawson Creek - my house in Bay Tree is right at the Alberta-British Columbia border - I have more customers in that city. I also do custom orders for customers who may have different preferences in terms of flavour. For instance, one customer, in particular, had requested for parmesan cheese to be thrown into the mix. For customers who wanted to spice up, we can add, say, a cayenne pepper, if requested. There are various ways to enhance flavours.

Adapted from an article originally published in the Central Peace Signal. The County has partnered with the newspaper to provide feature stories on some of the businesses in our community and the people who make them work.

COUNTY NEWS

BLUEBERRY FIRE HALL UPDATE



Site development for the new Blueberry Mountain Fire Hall is now underway!

The Request for Proposals for the construction of the building has now ended as of October 6, 2023. Administration have reviewed the proposals and made a selection and this will be taken before Council on October 30, 2023.

Construction on the fire hall is expected to commence later this fall and progress into 2024, with completion targeted for September 2024.

At the September 26, 2023 Council Meeting, Council reviewed the conceptual elevations, site plan, and photographs of the development. The building will be rotated to face north, and an approach installed from Highway 680 to allow emergency services easy and direct access to the highway. The proposed building will be similar in design to those in Bonanza, Savanna, and Woking.

More updates will be provided by the County as work commences.

NEWSPAPER SUBSCRIPTIONS

Residents and ratepayers will have recently noticed a new newspaper in their mailbox. Saddle Hills County has partnered with Town & Country News Grande Prairie to bring you even more local news relevant to you.

Alongside your weekly copy of the Central Peace Signal you will also receive a copy of

Town & Country News. Subscriptions for both are completely free and can be added or cancelled at any time by contacting our office at taxation@saddlehills.ab.ca or (780) 864-3760.



Please note the following information regarding subscriptions:

- Ratepayers who reside within Saddle Hills County, who are signed up to receive a copy of the Signal, will have their subscriptions renewed automatically on a yearly basis
- Non-resident ratepayers must annually request to have their subscription renewed
- Non-ratepaying residents (such as tenants) must annually request to have their subscription renewed.

This is put in place to ensure that we are sending information to all those who wish to receive it and not posting unwanted copies to vacant homes or those who have chosen to opt out.

KSITUAN COVERED JUG FILL

An additional \$15,000 has been added to the 2023 Capital Budget for the installation of a covered Jug Fill Station at Ksituan Water Treatment Plant. The Jug Fill will be the same as the one recently installed in Savanna and will allow residents easy access to potable water for their reusable water jugs. This will help those affected by the recent closure of the Blueberry Store, ensuring residents can continue to fulfill their water needs locally.

NURSE PRACTITIONER SPACE

Plans for the greatly anticipated Nurse Practitioner Program continue with the allocation of \$20,000 in funds to proceed with renovations to the County facility. The renovations will include operational space for the Nurse Practitioner to see patients and administer treatments and includes a private examination room. It is hoped renovations will be complete by early 2024. Further announcements on the program will be provided by the County, as available.

SPRING LAKE SKI HILL SUPPORT

Brian Peterson from the Spring Lake Ski Hill Association was present at the October 10, 2023 Council Meeting to discuss funding requirements for the continued operation of the recreation site. Council provided a financial contribution and grant totaling \$102,361 towards capital upgrades and to assist in replacing the ski rental equipment. Proposed upgrades for the 2023/24 season include completing the lift and repairing damage to the Chalet. These repairs consist of replacing the door and deck, flooring and painting, and upgrading the kitchen.

REMOTE WATER HAULING SUBSIDY PROGRAM

Council approved Policy UT02 - Remote Potable Water Hauling Subsidy Program, which will allow for the reimbursement of potable water hauling costs for domestic use for residences in areas prescribed by Council. Eligible residences will be reimbursed for potable water hauling costs at a rate of \$15 per cubic meter, not exceeding 120 cubic meters, to a maximum of \$1,800 per year. The subsidy is in place to accommodate the residences that do not fall within an advertised

rural potable water line development area. Applicants are required to provide documentation for water purchases within the calendar year to be submitted no later than January 31 of the following year. The program allows for one application per residence and will be launched in the Gundy, AB, area, as an area prescribed by Council, beginning in 2024. More information can be found on the County website.

STARS ANNUAL UPDATE

Glenda Farnden, Senior Municipal Relations Liaison with STARS, was present at the October 10, 2023 Council Meeting to provide an annual update on the recent activity of the organization. This included the implementation of a new fleet, new innovation and technology, mission statistics, and other information pertinent to County residents.



2023 saw a total of five patients flown by STARS from within Saddle Hills County. From 2010 to present, 42 patients have been flown from within the County's borders.

The County has partnered with STARS for many years and has pledged to sponsor \$200,000 per year for 2022-2025, in addition to \$100,000 per year from 2020-2024 for fleet renewal. For all the latest statistics and updates on STARS operations, you can view and download the presentation on our website.



MENTAL HEALTH SUPPORT
Scan to connect with crisis support and resources.

BUSINESS FEATURE

METAL ART BY RON



Woking, AB.
C: (780) 774-2017
H: (780) 882-0785

Q&A WITH RON DOETZEL, OWNER

Please tell us a little bit about yourself, including how you got started with smithing.

In 2011, I decided to quit farming after doing it for 30 years, sold my farm and moved east of Webster. I grain-farmed and cattle-farmed. Alongside farming, I ran a sawmill for 21 years, which I sold in 2005. Life was busy. I logged in the wintertime and sold lumber in the summer, when I'm supposed to be also haying. So, I reached a point where I was worn out. And so were my farming machinery - and I didn't want to buy new equipment and machinery anymore, so I knew it was time to quit. I had some vague idea of what I was going to do in retirement, but a chance meeting with the manager of the Debolt Farmers Market caused me to rethink my plan. I ended up becoming a farmers market vendor, showcasing metal craft ornaments. My first time as a farmers market vendor was in 2011 at the Debolt Christmas Farmers Market, about three months after I quit farming and relocated to Webster. I had a great time, and I thought my sales were pretty good for a first-time vendor. I have been going to different farmers markets ever since.

You must have done some sort of metal crafting before, or haven't you?

Life situations at the farm could force you to be flexible and innovate. When something breaks down, for example, you better learn quick how to fix it, or it would cost a lot of money otherwise to get outside help. So, I learned how to weld as machinery broke down and needed fixing.

A lot of the metals you fashion things out of are used. Where do you get them from?

Some are given to me by individuals. I also retrieve some from the landfill in Woking. So, somebody's junk is my treasure.

Do you charge extra for custom orders?

No. I would charge the same price as I would sell it at the farmers market. However, I would ask for a deposit if (1) I don't know the customer, and (2) if the order is something I'm not sure I can sell in the event the customer decides to cancel.

What is usually your turn-around time for custom orders?

Turn-around time depends on how complex and intricate the design is. But I probably should be able to make most orders within 2-3 hours. In the beginning, some of the orders were quite a challenge to make. Now, they're part of the things I bring to the farmers market regularly.

What has your experience been like at farmers markets and which markets can people catch you at?

Thanks to the farmers markets, I've found a new calling, if you will, in life. My experience at the Christmas Market in Debolt in 2011 had encouraged me to make more stuff, which I then brought to farmers markets in Clairmont, Beaverlodge, Rycroft, and Peace River. At one point, I also went to Dawson Creek. I now live in Woking after six-and-a-half years in Webster, so I tend to go to farmers markets closer to me. I now mainly go to Rycroft, Spirit River, Grande Prairie, and Webster. It was at the farmers markets that my metal crafts have expanded. I feel like I got bigger every year.

Adapted from an article originally published in the Central Peace Signal. The County has partnered with the newspaper to provide feature stories on some of the businesses in our community and the people who make them work.

MEET THE STAFF

Every issue we introduce you to the talented and committed individuals responsible for all the important day-to-day activities that make Saddle Hills County run. From seasonal weed inspectors, to grader operators, administrative staff, directors, and all those in-between we are incredibly grateful for their efforts and support.

Just like our community, our staff come from all walks of life, and have varied interests and hobbies. We hope that by getting to know a little bit about them in these pages we can share some of our common experiences and continue to make Saddle Hills County the incredible place it is.



MIKAELA MCKAY, PROGRAMS ADMINISTRATOR

Mikaela began her position as Programs Administrator in February, 2023, and helps to administer our FCSS and associated programs. She attended Northern Lights College from 2019-2020 to complete a course in Applied Business Technology. She has lived in Saddle Hills County for her entire life and was raised on her family farm in Bay Tree, before moving to Bonanza where she now lives with her three dogs. In her spare time, she enjoys photography, animals, the outdoors, and spending time with her two nieces.




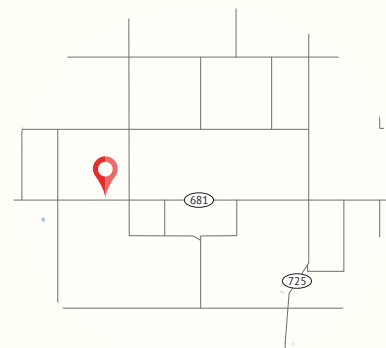
NATHAN OLSON, ASSISTANT TO THE DIRECTOR OF OPERATIONS

Nathan began his current role as the Administrative Assistant to the Director of Operations in November 2022; this is his third role at the County. He grew up in southwest Saskatchewan, close to Lake Diefenbaker, on a family-farm and graduated with a Master of Public Administration (MPA) from the University of Saskatchewan. Nathan has lived in four provinces and four countries over the years, settling in Silver Valley four years ago. In his spare time he enjoys reading novels by Charles Dickens.

TOBOGGANING



 SADDLE HILLS COUNTY SLOPES
HWY 681, SAVANNA, AB.
(BEHIND THE SAVANNA WATER TREATMENT PLANT)



WINTER 2023 HOURS

Every day during daylight hours including both weekdays & weekends

Washrooms available on site.
No motorized vehicles allowed.

SNOWSHOEING & CROSS COUNTRY SKIING



 MOONSHINE LAKE PROV. PARK
HWY 725, SAVANNA, AB. N. OF HWY 49

 SPRING LAKE
ACCESSIBLE FROM HWY 59 OR N OF HYTHE

 HILLTOP LAKE
HWY 724, NORTHMARK, AB.

 COTILLION PARK
RGE. ROAD 114A, SILVER VALLEY, AB.

Trails in and around our local campsites make perfect snowshoeing and cross country skiing locations come winter. Dress for the weather, bring your own equipment, and explore our panoramic winter landscape.

ICE SKATING



Community organizations and businesses throughout Saddle Hills County offer a variety of winter recreational activities, including ice skating rinks! Stay tuned to our social media pages and website for opening dates.

 BAY TREE GENERAL STORE
HWY 49, BAY TREE, AB.

 SAVANNA REC. PLEX (INDOOR)
HWY 681, SAVANNA, AB.

 WOKING OUTDOOR SKATING RINK
NEXT TO WOKING MULTIPLEX, WOKING, AB. T0H 3V0

ICE FISHING



 MOONSHINE LAKE PROV. PARK
HWY 725, SAVANNA, AB. N. OF HWY 49

 SPRING LAKE
ACCESSIBLE FROM HWY 59 OR N OF HYTHE

 SHELL TRUE NORTH POND
HWY 49, KSITUAN, AB.

Spring Lake is the host of an annual fishing derby, and has the added benefit that ice fishermen can drive their vehicles out onto the ice (once the ice is thick enough to support vehicle weight) and even place ice shacks until March 30.

COMMUNITY EVENTS



Just because it's winter it doesn't mean that the events season is over! You can view upcoming County and Community Events, or submit your own, on our website at calendar.saddlehills.ab.ca or by scanning the QR code.





Welcome to our ongoing series, Municipal Mythbusters, helping you to better understand municipal processes and answer some of the most frequently asked questions.

Have a myth you'd like us to bust? Get in touch!

DID YOU KNOW?

While Assessment and Taxes are related they are two very different processes. "Assessment" is the process of assigning a dollar value to a property according to market value. This value is then used to calculate the amount of taxes owed. "Taxation" is the process of applying a tax rate to a property's assessed value. This determines the taxes payable. Tax rates are determined by Council annually and available in the current Tax Rates Bylaw. Below are the answers to some commonly asked questions received by County residents.

FAQS:

Q: Are cabins assessable?

A: Yes, all buildings and structures are assessable in the Province of Alberta.

Q: If my building or structure is on skids or wheels, is it still assessable?

A: Yes, all building and structures are assessable, including those on skids or wheels. Special conditions do apply to travel trailers. Assessors will determine whether you, as a ratepayer, have any exemptions from the 'Actual Use', and will apply all proper exemptions to that building.

Q: Can my cabin, bunk house, or outbuilding be assessed as a farm building?

A: The 'Actual Use' of the building is determined by the Assessor, as laid out in the Municipal Government Act. If the 'Building' is used for sheltering 'People' that it is a Residential Use property. If the 'Building' is used to shelter 'Farm Animals' the 'Actual Use' would be Farm Use and exemptions may apply. This could also be a 'Multi-Use' building ie. where there is a unit or loft used for residential purposes and a unit or other level used for farming purposes.

All the above answers can be found in the Municipal Government Act, Part 9, Sec. 284 (1) and Part 9, Sec 297 (1).

You can contact the Assessment Department directly with any questions at **(780) 506-0101**



Junction of Highway 49 and Highway 725, RR 1, Spirit River, Alberta, Canada, T0H 3G0

Phone: (780) 864-3760 | Fax: (780) 864-3904 | Toll Free: 1 (888) 864-3760

Monday to Friday 8:15 AM to 4:30 PM



www.saddlehills.ab.ca



[@saddlehillscounty](https://www.facebook.com/saddlehillscounty)



[@saddlehillsab](https://twitter.com/saddlehillsab)



[@saddlehillscounty](https://www.instagram.com/saddlehillscounty)